

3Dia-Saw Grinder

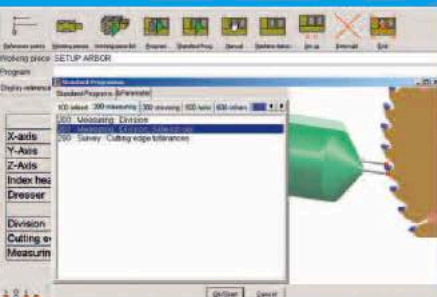


**LACH
DIAMANT**[®]
established 1922

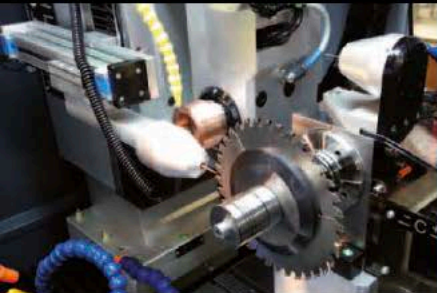


Leader in Diamond Grinding Technology

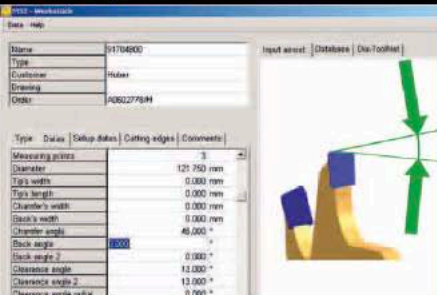
3Dia-Saw



Easy to use - no CNC knowledge needed



Measuring



Define your saw by parameters



Multiple manufacturing without extra charge



all in one operation - scoring
hogging saws, hogs



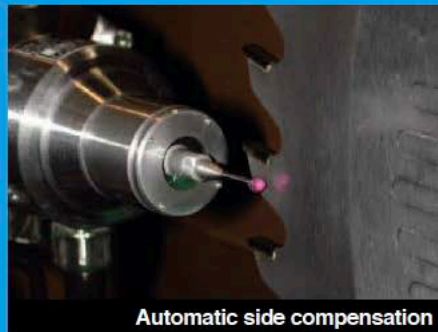
LACH DIAMANT®

3D Saw Grinder

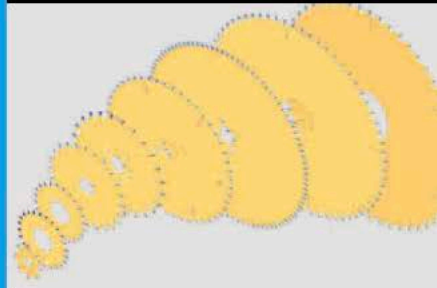


3Dia-Saw Grinder
- iSDiSplus -

g blades, saw blades triple chip,
s and more, fully automatic



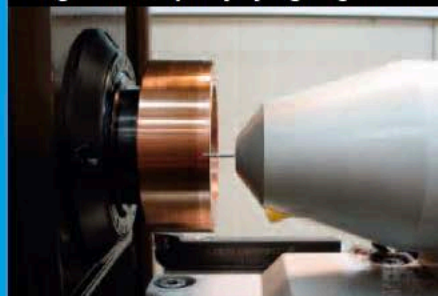
Automatic side compensation



from \varnothing 80mm to \varnothing 800mm



High surface quality by digital generator



Two probes for better control

Technical data

Axes

X-axis	420 mm
Y-axis	420 mm
Z-axis	270 mm
C-axis	360°
E-axis	360° manually
D-axis	150°
Positioning accuracy of CNC-axes	0,001 mm
Repeat accuracy of CNC-axes	0,001 mm
Worktable	510 x 560 mm (6 Tslots)
Maximum tool diameter	700 mm*
Tool collet	ISO 40

*optional: 800 mm

Control

Industrial PC with multi-axes processor	
Operating system	Microsoft Windows®
Display Touch screen	LCD TFT monitor 17"

Measuring

3-D measuring system

optional: additional 3-D measuring probe for automatic recording of electrode parameters

Dimensions

Machine	2250 x 1400 x 2150 mm
Operator's console	520 x 600 x 600 mm
Weight	2500 kg
Work space requirement	6000 x 4000 x 3000 mm

Ventilation

Air capacity	600 m3/h
Filter class	Stationary filter class "S"

Safety systems

Double safety through two self-sustaining fire warning systems.

At impending danger the eroding process is automatically stopped at once.

Fire extinguishing system CO2 Fill-up quantity 6 kg

Electrical data

Input voltage	8 KW / 230/400 VAC – 50 Hz / 60 Hz
Fuse	400 V / 20 A
Network configuration	TN-S system

Color

RAL 7016 / RAL 9006 / RAL 9007

