

WIN

B 31378

In this Issue:

Tooling

Lacquering

IWF Preview

Wood Based Panels

WOODWORKING INTERNATIONAL

Vol. 18 No. 3 - August 2000 US\$ 10

Energy

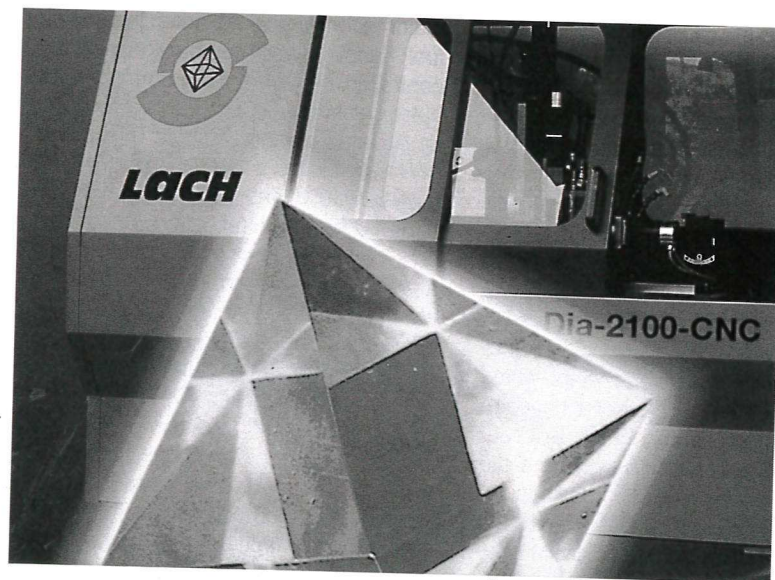
Products

New Product For The Sharpening Of Polycrystalline Dia- mond Tools (PCD)

The new machine line Dia 2100 CNC manufactured by Lach Diamant is used for the easy eroding by rotation all the way to the very fast PCD machining by >turboflash< diamond grinding wheels.

When the new cutting material, PCD, in 1973 was available for the first time to the tool manufacturer, the grinding of this polycrystalline diamond substance was very tedious and time consuming. According to the state of the art and the textbook opinion, diamond could only be machined with diamond.

This was only changed in 1978 when Horst Lach had the idea to utilize spark erosion for the forming of PCD. The result was that since the beginning of the 1980's



not only diamond tools and grinding wheels, but also grinding- and sharpening machines were manufactured according to the so-called *Original LACH EDG (Electrical Discharge Grinding)* and were sold all over the world.

The idea to combine the diamond grinding wheel in a symbiosis with the present >EDG plus< system was never completely abandoned in all the years.

wheels in conjunction with the machine series >Dia 2100 CNC<.

The product line >Dia 2100 CNC< with additional new components, for example the automatic manufacturing of diamond router bits or diamond saw blades, can be varied either as a universal- or special machine according to customer wish.

For more information
please quote

Key No. 42443