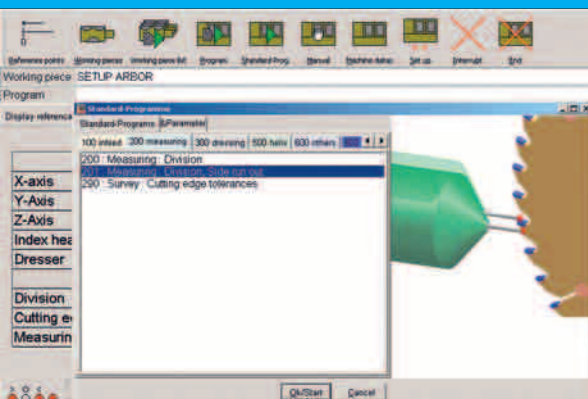
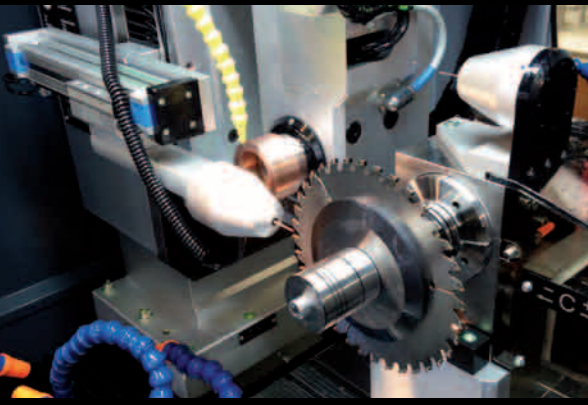


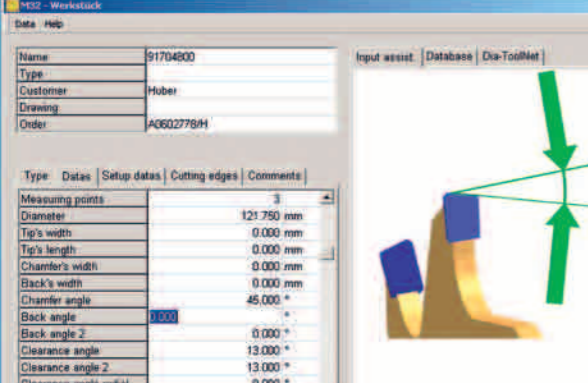
3Dia-Saw Grinder



Easy to use - no CNC knowledge needed



Measuring



Define your saw by parameters



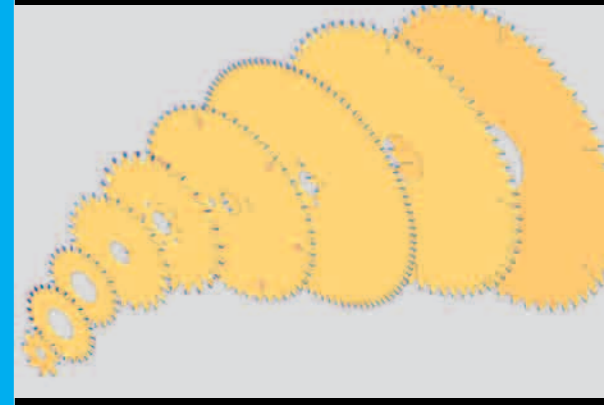
Multiple manufacturing without extra charge



all in one operation - scoring blades, saw blades triple chip, hogging saws, hoppers and more, fully automatic



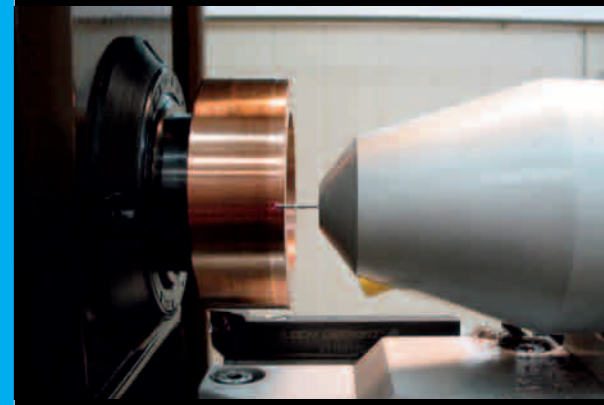
Automatic side compensation



from \varnothing 80mm to \varnothing 800mm



High surface quality by digital generator



Two probes for better control

Technical data

Axes

X-axis	420 mm
Y-axis	420 mm
Z-axis	270 mm
C-axis	360°
E-axis	360° manually
D-axis	150°
Positioning accuracy of CNC-axes	0,001 mm
Repeat accuracy of CNC-axes	0,001 mm
Worktable	510 x 560 mm (6 Tslots)
Maximum tool diameter	700 mm*
Tool collet	ISO 40

*optional: 800 mm

Control

Industrial PC with multi-axes processor	
Operating system	Microsoft Windows®
Display Touch screen	LCD TFT monitor 17"

Measuring

3-D measuring system

optional: additional 3-D measuring probe for automatic recording of electrode parameters

Dimensions

Machine	2250 x 1400 x 2150 mm
Operator's console	520 x 600 x 600 mm
Weight	2500 kg
Work space requirement	6000 x 4000 x 3000 mm

Ventilation

Air capacity	600 m3/h
Filter class	Stationary filter class "S"

Safety systems

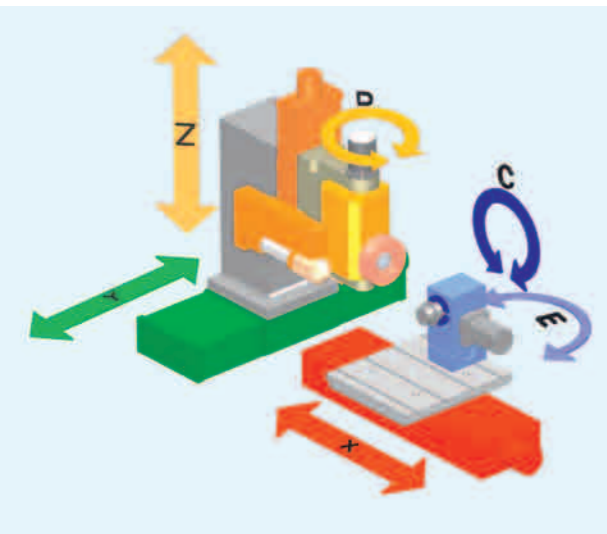
Double safety through two self-sustaining fire warning systems.
At impending danger the eroding process is automatically stopped at once.
Fire extinguishing system CO2 Fill-up quantity 6 kg

Electrical data

Input voltage	8 KW / 230/400 VAC – 50 Hz / 60 Hz
Fuse	400 V / 20 A
Network configuration	TN-S system

Color

RAL 7016 / RAL 9006 / RAL 9007

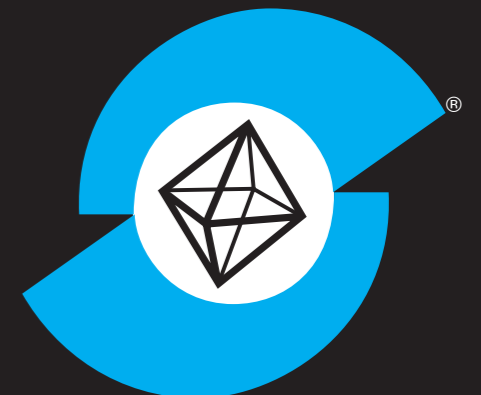


3Dia-Saw Grinder



LACH DIAMANT®

established 1922



Leader in Diamond Grinding Technology



Jakob Lach GmbH & Co.KG
Donaustraße 17
D-63452 Hanau
Phone: +49 6181 103-0
Fax: +49 6181 103-860
office@lach-diamant.de
www.lach-diamant.de